

HV 8421

1

7

4

# HOUSES

KEEPERS PLACE

LITTLEMORE

HV 8421

1

7

5

OX4

KEEPERS PLACE

LITTLEMORE

# THE THOMAS

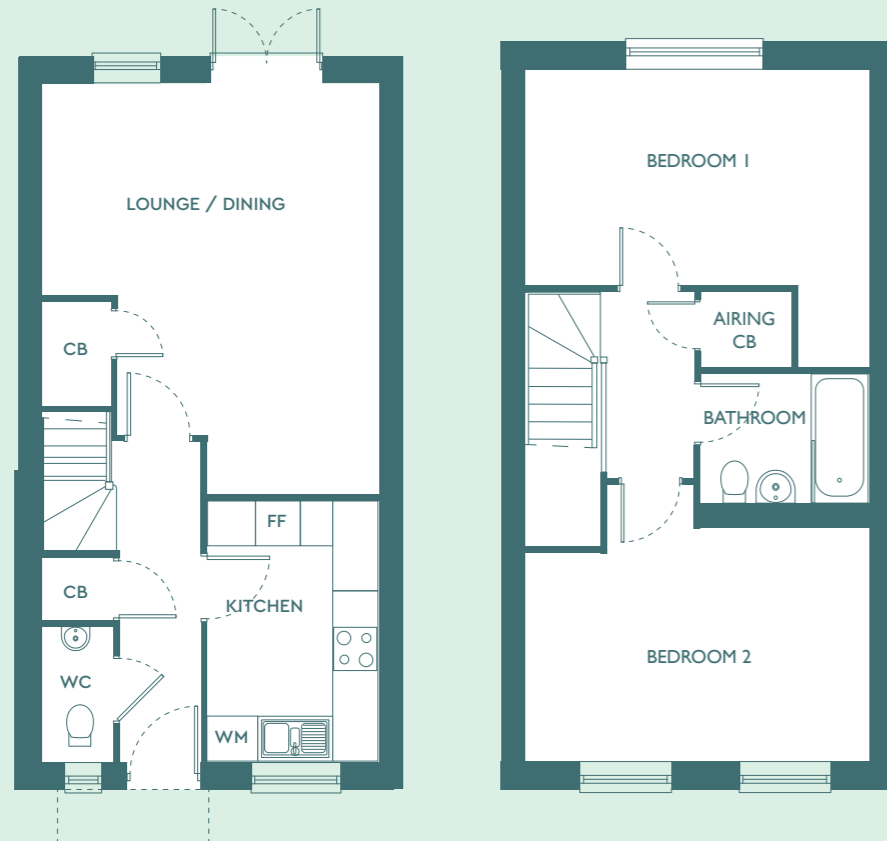


# THE THOMAS

2 BEDROOM HOUSE (TYPE 1-01)

Total Area 80m<sup>2</sup> 861ft<sup>2</sup>

Plots: 32 & 33



GROUND FLOOR

FIRST FLOOR

Kitchen	3.45m	×	2.29m	11' 4"	×	7' 6"
Living/Dining	5.36m	×	4.45m	17' 7"	×	14' 7"
Bedroom 1	4.45m	×	2.79m	14' 7"	×	9' 2"
Bedroom 2	4.45m	×	2.97m	14' 7"	×	9' 9"

CB = STORAGE CUPBOARD WM = WASHING MACHINE DW = DISHWASHER FF = FRIDGE FREEZER

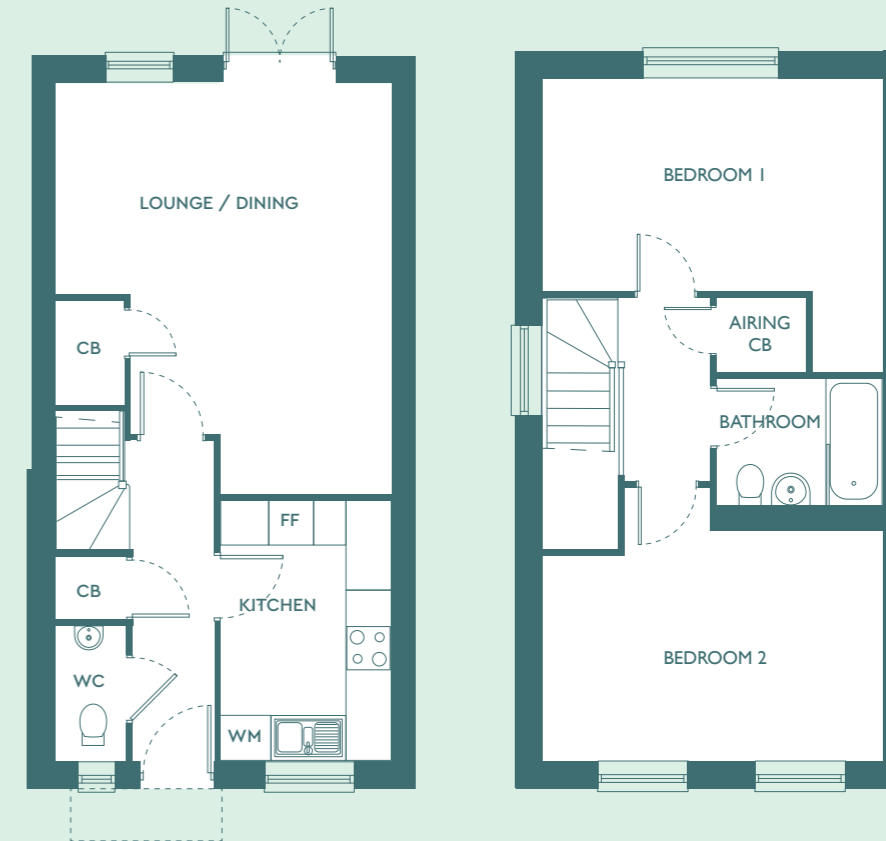
Lengths are estimates and can not to be relied on.

# THE THOMAS+

2 BEDROOM HOUSE (TYPE 1-02)

Total Area 80m<sup>2</sup> 861ft<sup>2</sup>

Plot: 34



GROUND FLOOR

FIRST FLOOR

Kitchen	3.45m	×	2.29m	11' 4"	×	7' 6"
Living/Dining	5.36m	×	4.45m	17' 7"	×	14' 7"
Bedroom 1	4.45m	×	2.79m	14' 7"	×	9' 2"
Bedroom 2	4.45m	×	2.97m	14' 7"	×	9' 9"

CB = STORAGE CUPBOARD WM = WASHING MACHINE DW = DISHWASHER FF = FRIDGE FREEZER

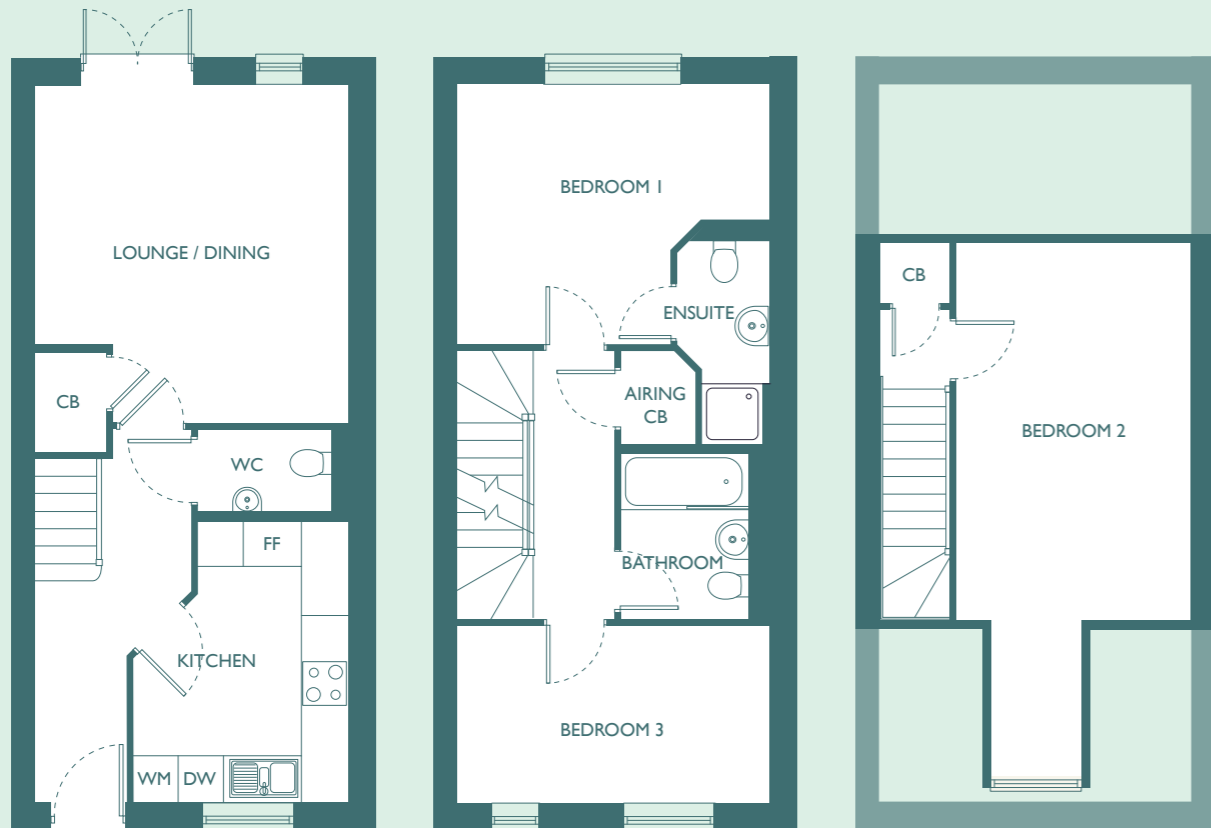
Lengths are estimates and can not to be relied on.

# THE EDWARD

3 BEDROOM HOUSE (TYPE 3A-01)

Total Area 101m<sup>2</sup> 1087ft<sup>2</sup>

Plots: 37 & 40



GROUND FLOOR

FIRST FLOOR

SECOND FLOOR

Kitchen	3.71m	×	2.82m	12' 2"	×	9' 3"
Living/Dining	4.45m	×	4.06m	14' 7"	×	13' 4"
Bedroom 1	4.06m	×	3.43m	13' 4"	×	11' 3"
Bedroom 2	5.26m	×	3.07m	17' 3"	×	10' 1"
Bedroom 3	4.06m	×	2.29m	13' 4"	×	7' 6"

CB = STORAGE CUPBOARD WM = WASHING MACHINE DW = DISHWASHER FF = FRIDGE FREEZER

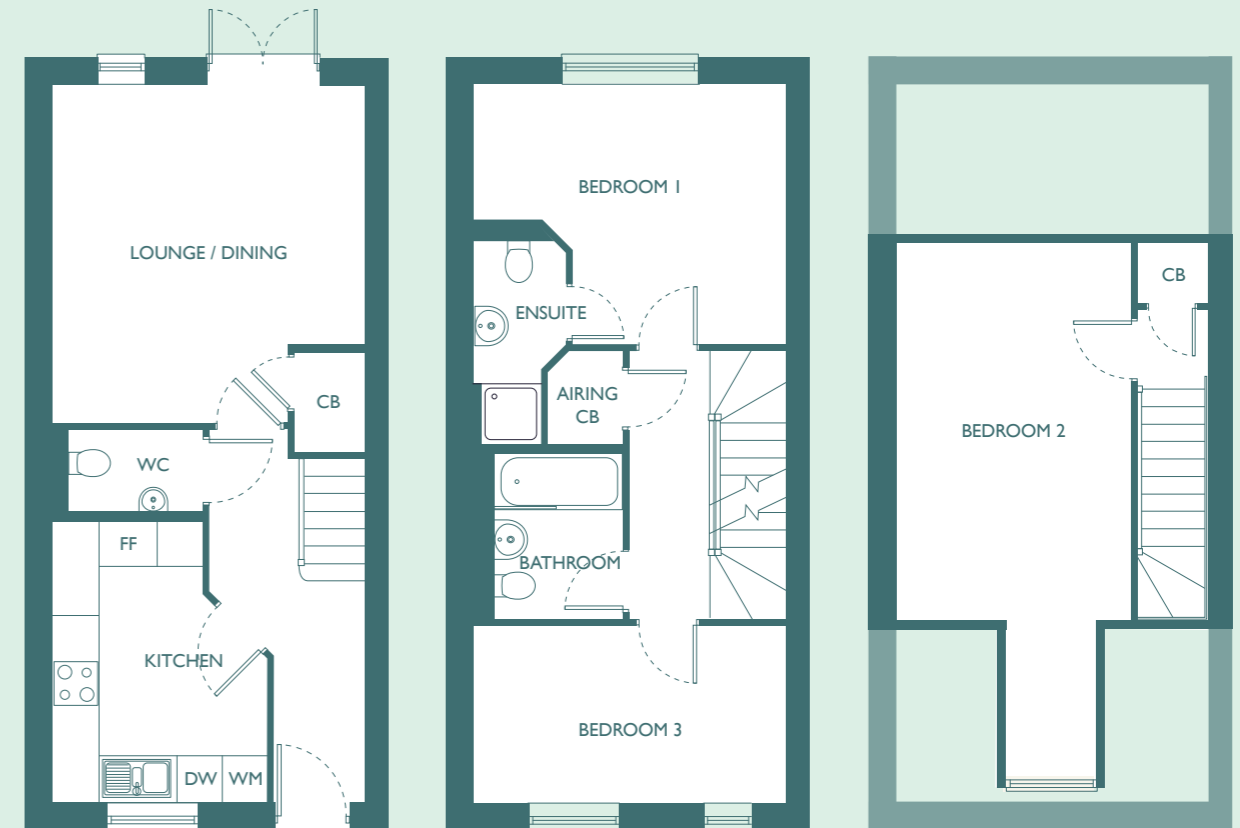
Lengths are estimates and can not to be relied on.

# THE EDWARD

3 BEDROOM HOUSE (TYPE 3A-02)

Total Area 101m<sup>2</sup> 1087ft<sup>2</sup>

Plots: 36 & 39



GROUND FLOOR

FIRST FLOOR

SECOND FLOOR

Kitchen	3.71m	×	2.82m	12' 2"	×	9' 3"
Living/Dining	4.45m	×	4.06m	14' 7"	×	13' 4"
Bedroom 1	4.06m	×	3.43m	13' 4"	×	11' 3"
Bedroom 2	5.26m	×	3.07m	17' 3"	×	10' 1"
Bedroom 3	4.06m	×	2.29m	13' 4"	×	7' 6"

CB = STORAGE CUPBOARD WM = WASHING MACHINE DW = DISHWASHER FF = FRIDGE FREEZER

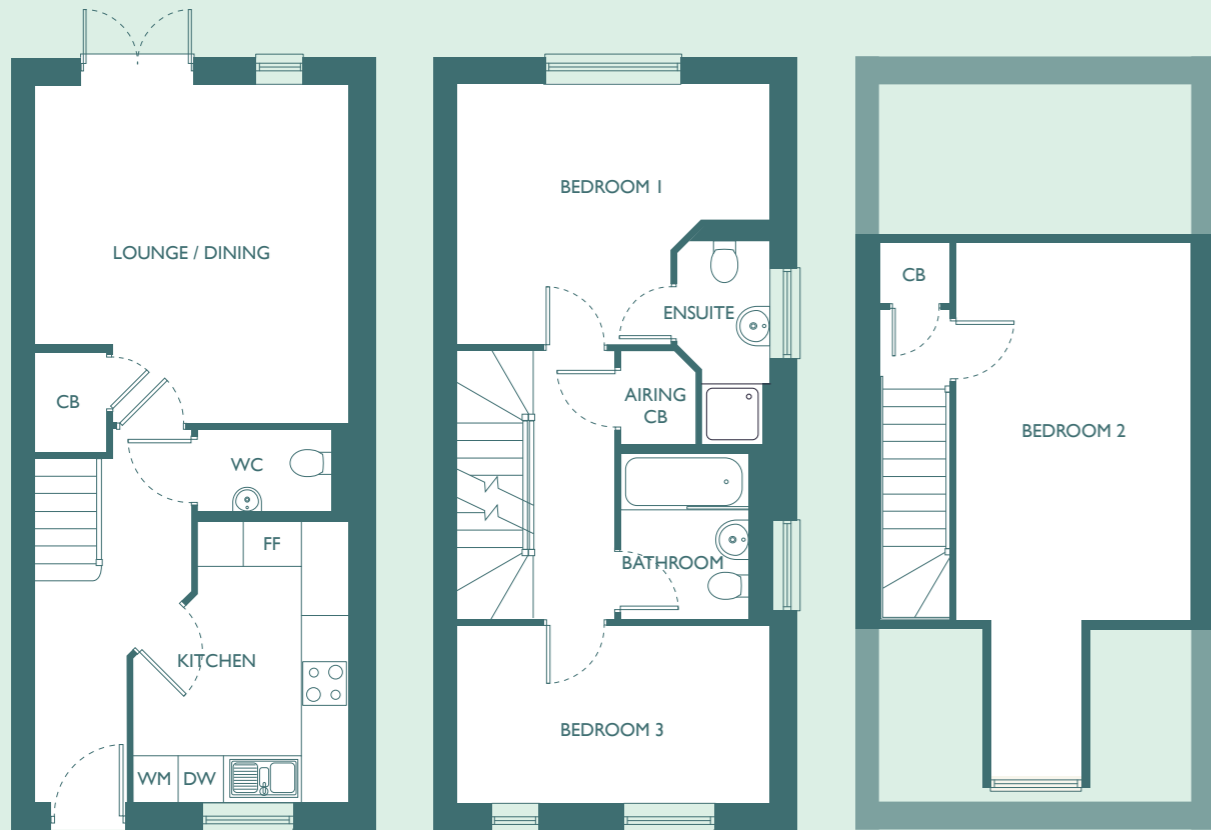
Lengths are estimates and can not to be relied on.

# THE EDWARD+

3 BEDROOM HOUSE (TYPE 3A-03)

Total Area 101m<sup>2</sup> 1087ft<sup>2</sup>

Plots: 35 & 38



GROUND FLOOR

FIRST FLOOR

SECOND FLOOR

Kitchen	3.71m	×	2.82m	12' 2"	×	9' 3"
Living/Dining	4.45m	×	4.06m	14' 7"	×	13' 4"
Bedroom 1	4.06m	×	3.43m	13' 4"	×	11' 3"
Bedroom 2	5.26m	×	3.07m	17' 3"	×	10' 1"
Bedroom 3	4.06m	×	2.29m	13' 4"	×	7' 6"

CB = STORAGE CUPBOARD WM = WASHING MACHINE DW = DISHWASHER FF = FRIDGE FREEZER

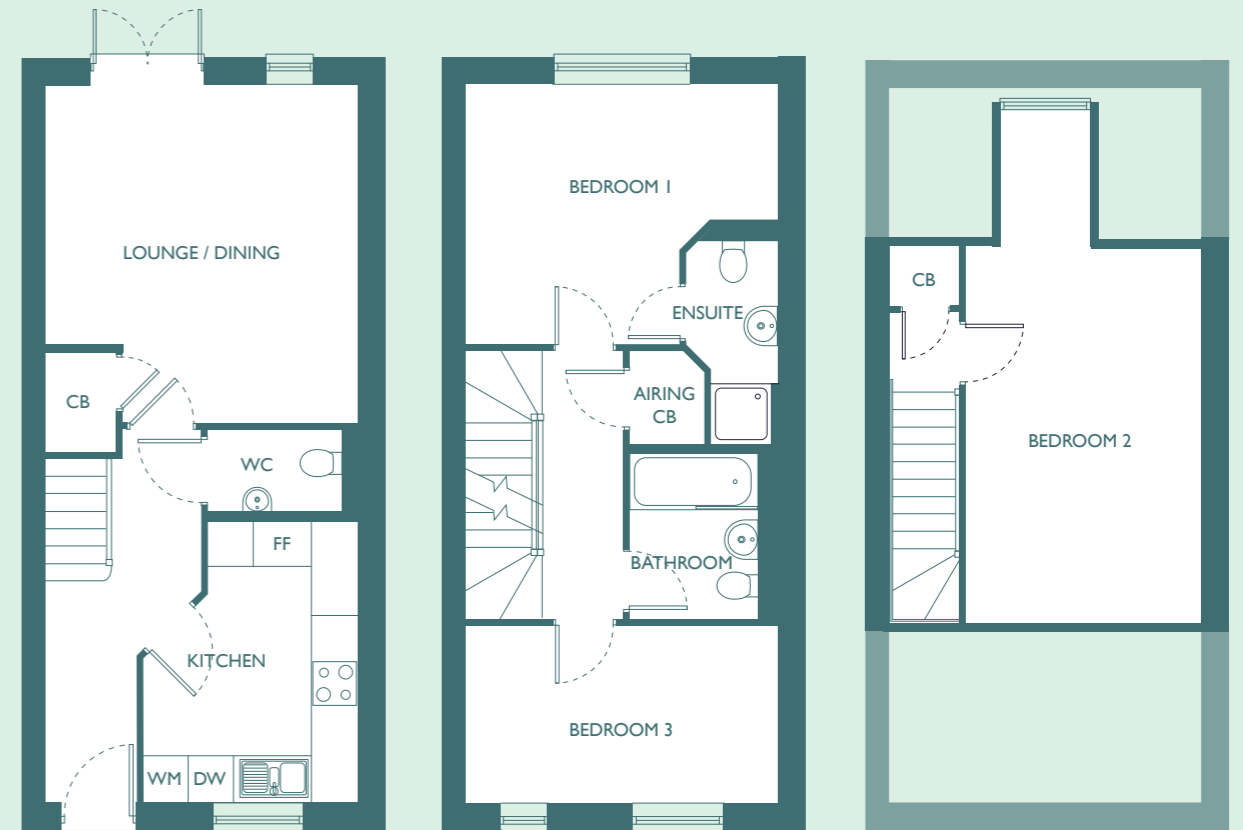
Lengths are estimates and can not to be relied on.

# THE PERCY

3 BEDROOM HOUSE (TYPE 3B-01)

Total Area 101m<sup>2</sup> 1087ft<sup>2</sup>

Plots: 42, 44 & 49



GROUND FLOOR

FIRST FLOOR

SECOND FLOOR

Kitchen	3.71m	×	2.82m	12' 2"	×	9' 3"
Living/Dining	4.45m	×	4.06m	14' 7"	×	13' 4"
Bedroom 1	4.06m	×	3.43m	13' 4"	×	11' 3"
Bedroom 2	5.26m	×	3.07m	17' 3"	×	10' 1"
Bedroom 3	4.06m	×	2.29m	13' 4"	×	7' 6"

CB = STORAGE CUPBOARD WM = WASHING MACHINE DW = DISHWASHER FF = FRIDGE FREEZER

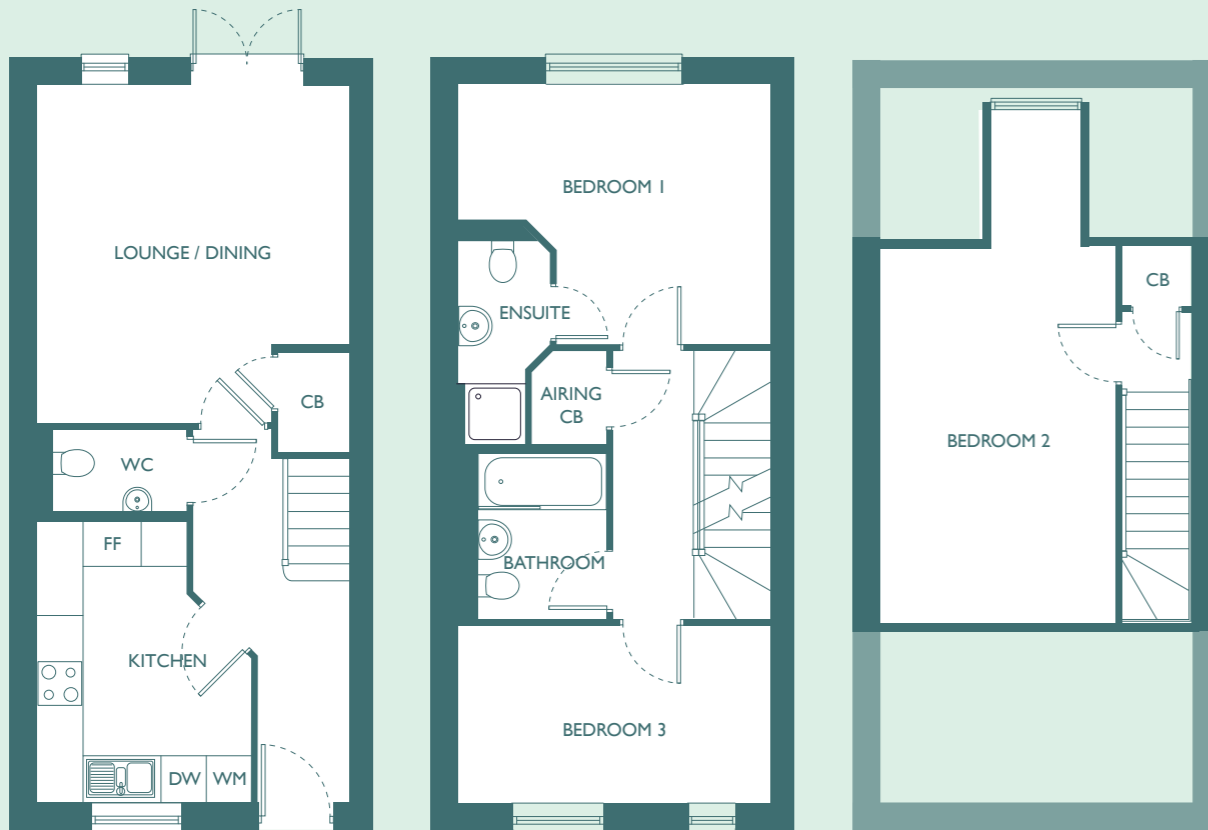
Lengths are estimates and can not to be relied on.

# THE PERCY

3 BEDROOM HOUSE (TYPE 3B-02)

Total Area 101m<sup>2</sup> 1087ft<sup>2</sup>

Plots: 41, 43, 47 & 48



GROUND FLOOR

FIRST FLOOR

SECOND FLOOR

Kitchen	3.71m	×	2.82m	12' 2"	×	9' 3"
Living/Dining	4.45m	×	4.06m	14' 7"	×	13' 4"
Bedroom 1	4.06m	×	3.43m	13' 4"	×	11' 3"
Bedroom 2	5.26m	×	3.07m	17' 3"	×	10' 1"
Bedroom 3	4.06m	×	2.29m	13' 4"	×	7' 6"

CB = STORAGE CUPBOARD WM = WASHING MACHINE DW = DISHWASHER FF = FRIDGE FREEZER

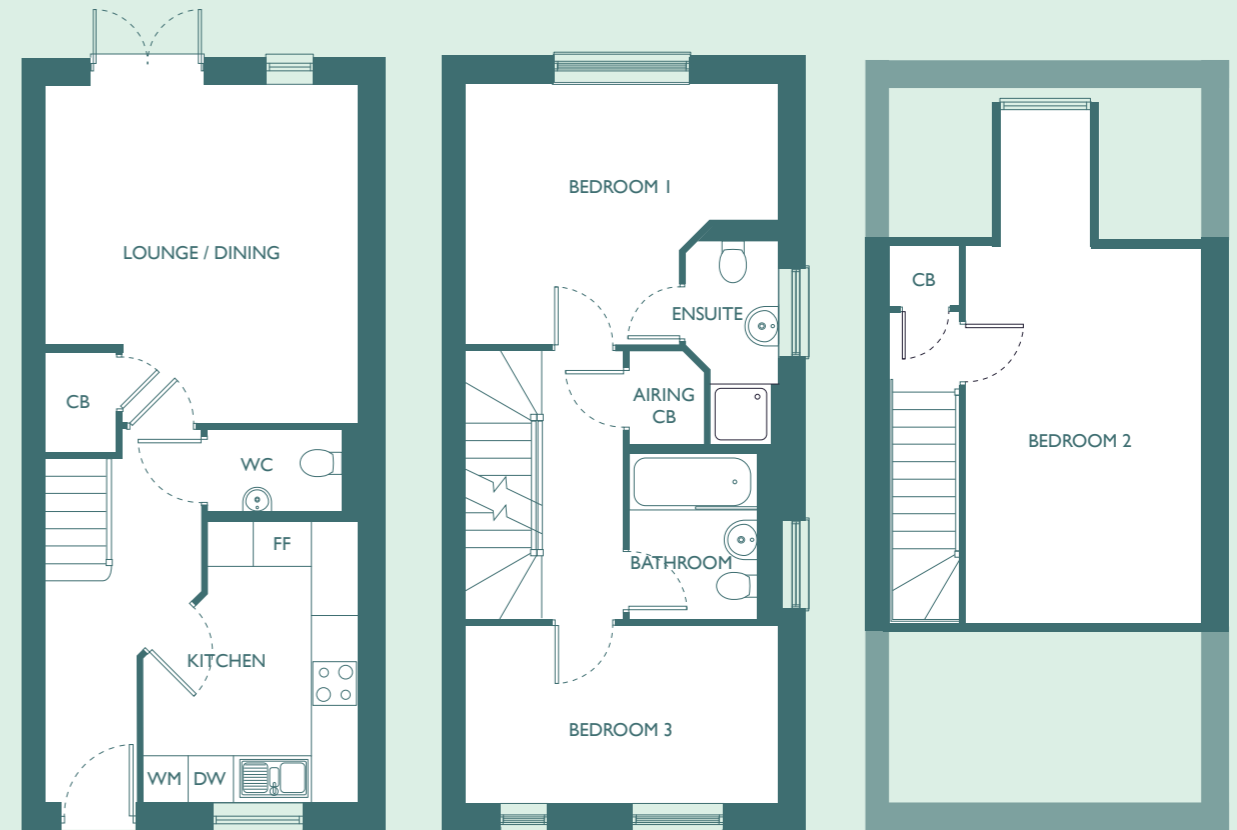
Lengths are estimates and can not to be relied on.

# THE PERCY+

3 BEDROOM HOUSE (TYPE 3B-03)

Total Area 101m<sup>2</sup> 1087ft<sup>2</sup>

Plot: 46



GROUND FLOOR

FIRST FLOOR

SECOND FLOOR

Kitchen	3.71m	×	2.82m	12' 2"	×	9' 3"
Living/Dining	4.45m	×	4.06m	14' 7"	×	13' 4"
Bedroom 1	4.06m	×	3.43m	13' 4"	×	11' 3"
Bedroom 2	5.26m	×	3.07m	17' 3"	×	10' 1"
Bedroom 3	4.06m	×	2.29m	13' 4"	×	7' 6"

CB = STORAGE CUPBOARD WM = WASHING MACHINE DW = DISHWASHER FF = FRIDGE FREEZER

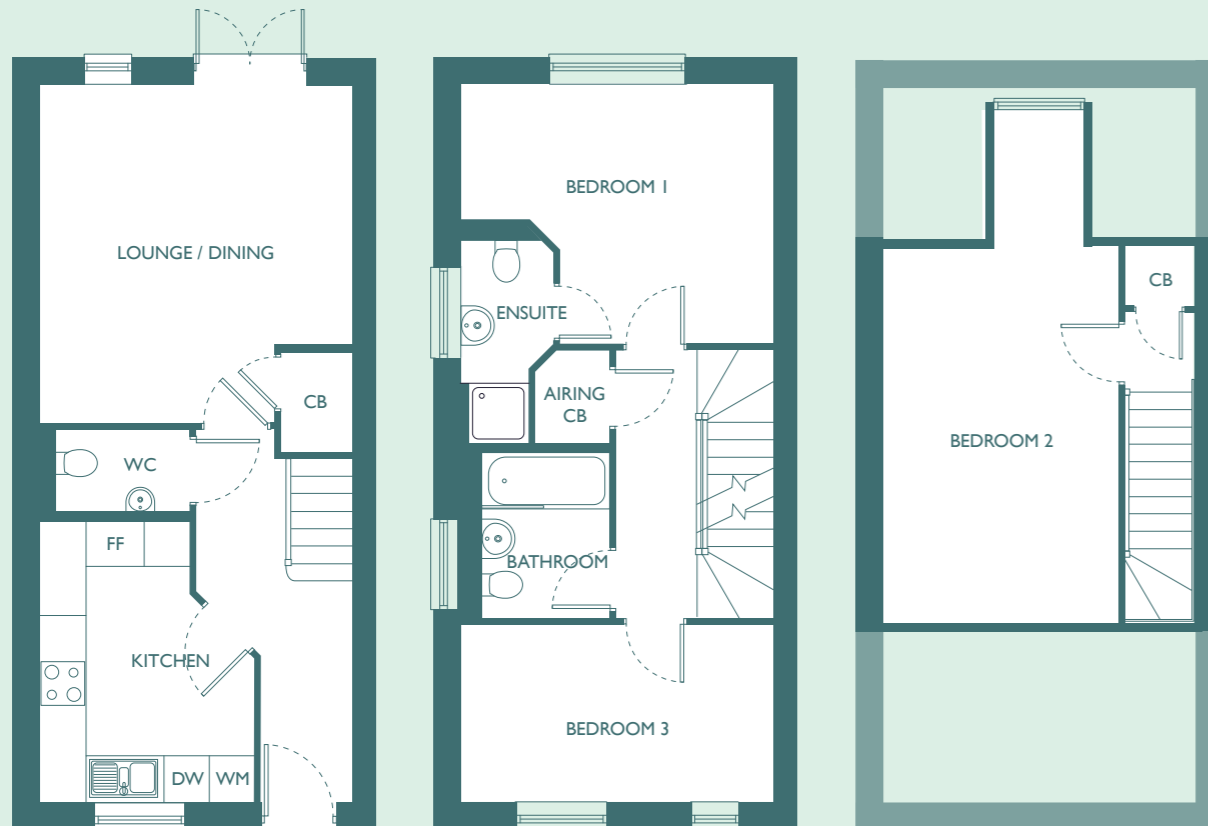
Lengths are estimates and can not to be relied on.

# THE PERCY+

3 BEDROOM HOUSE (TYPE 3B-04)

Total Area 101m<sup>2</sup> 1087ft<sup>2</sup>

Plots: 45 & 50



GROUND FLOOR

FIRST FLOOR

SECOND FLOOR

Kitchen	3.71m	×	2.82m	12' 2"	×	9' 3"
Living/Dining	4.45m	×	4.06m	14' 7"	×	13' 4"
Bedroom 1	4.06m	×	3.43m	13' 4"	×	11' 3"
Bedroom 2	5.26m	×	3.07m	17' 3"	×	10' 1"
Bedroom 3	4.06m	×	2.29m	13' 4"	×	7' 6"

CB = STORAGE CUPBOARD WM = WASHING MACHINE DW = DISHWASHER FF = FRIDGE FREEZER

Lengths are estimates and can not to be relied on.

# THE THOMAS



# THE PERCY



# HOUSE SPECIFICATIONS

## KITCHEN

- Symphony 'Hacienda' range fitted Kitchen – Colours: Light Grey Driftwood Wall Units with Nordic Blue Base Units and Copper Slate Worktop OR Platinum Grey Wall Units with Grey Driftwood and Alaska White Worktop (depending on plot).
- Fitted appliances including Fridge/Freezer, Washing Machine, Dishwasher, Electric Induction Hob, Electric Oven & Cookerhood,
- Luvanto LVT Plank Flooring in 'Priory Oak'
- LED downlights

## BATHROOM

- Minoli 'Levin' Almond Floor & Wall Tiles
- Contemporary white bathroom suite
- Shower over bath with glass shower screen
- Chrome ladder style heated towel rail
- LED downlights
- Shaver point

## EN SUITE\*

- Minoli 'Levin' Almond Floor & Wall Tiles
- Contemporary white wc & washbasin
- Shower in glass shower cubicle
- LED downlights
- Shaver point

## BEDROOMS

- TV & Data Points to Bedroom 1
- Lano Startwist Supreme Carpet in 'Alpaca'

## FLOORING

- Luvanto LVT Plank Flooring in 'Priory Oak' to Hallway, Kitchen/Living/Dining areas and Cloakroom
- Lano Startwist Supreme Carpet in 'Alpaca' to Bedrooms, Stairs and Upper Hallways
- Minoli 'Levin' Almond Floor & Wall Tiles to Bathroom and Ensuite\*

## EXTERIOR

- Mains Powered Doorbell
- Outside Lighting
- Turfed Rear Garden
- Outside Tap to Rear Garden
- Outside Power Socket to rear garden

## LIGHTING & SAFETY

- LED Downlights to Kitchen, Bathroom, WC and Ensuite\*
- Pendant Lighting to all other rooms
- Smoke & Heat Detectors

## ENVIRONMENTAL & SUSTAINABILITY

- Air Source Heat Pump
- Mechanical Extract Ventilation. Ventilation in your home has been provided using a continuous mechanical extract ventilation for shower rooms, bathrooms and kitchens, with trickle vents in most window frames, and openable windows. Together these provide background ventilation air flows to remove moisture, odours, and other indoor pollutants from your home, with fresh air supplied through trickle vents.

## PARKING

- Parking permits will be issued on application, one per household. There will be a separate zone for the shared ownership house parking, 19 spaces for 19 homes, spaces will be unallocated.
- Electric Vehicle Charging Point (numbers and locations of activated points dependant on demand). These charging points are not owned by the homeowner and are part of the estate.



THE PERCY

\*Ensuites in 3 bedroom homes only, refer to floorplans.

The above specification shown is for general guidance and is subject to change due to Oxford City Council's policy of continuous improvement. The finished product may vary from the information provided. Please speak to our sales advisor for more details.

# THE EDWARD



**OX**<sup>®</sup>  
Place

[oxplace.co.uk](http://oxplace.co.uk)

For all sales enquiries and further information  
please contact our selling agents.

**Breckon & Breckon**  
est. 1947

[breckon.co.uk](http://breckon.co.uk)

01865 261 222

[keepersplace@breckon.co.uk](mailto:keepersplace@breckon.co.uk)

Twining House, 294 Banbury Rd,  
Summertown, Oxford OX2 7ED

Disclaimer  
All information in this document is correct at the time of publication going to print June 2026. The contents of this brochure should not be considered material information for the purposes of purchasing a home. No image or photograph (whether computer generated or otherwise) is taken as a statement or representation of fact, and no image or photograph (whether computer generated or otherwise) forms part of any offer, contract, warranty or representation.