

OX Place

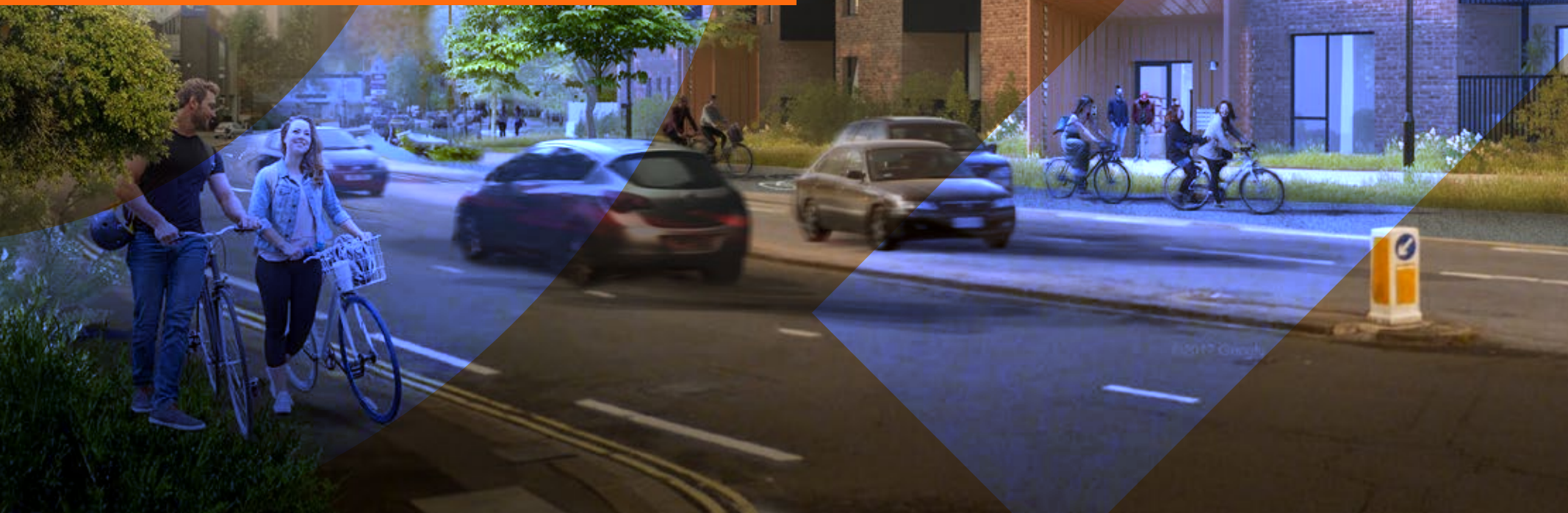


The Curve

20 uniquely designed shared
ownership houses & apartments

Homes for living. Homes for life.

oxplace.co.uk





Built around you

Sitting proudly on
Between Towns
Road in Oxford, The
Curve is a flagship
development of 17
apartments, and three
town houses

Provided by OX Place in partnership
with Oxford City Council, and the Future
Oxfordshire Partnership.

www.oxford.gov.uk



**OXFORD
NEEDS
HOMES**

**FUTURE
OXFORDSHIRE
PARTNERSHIP**

Breckon & Breckon
est. 1947

breckon.co.uk/thecurve



About The Curve

Taking its name from its own curvature along the road, The Curve will host 20 shared ownership homes in total, providing a fantastic opportunity for well-connected homes that benefit from all Oxford has to offer and its wider connections.

Just a short hop to Oxford's ring road allows for travel to London and Bicester with ease, with regular bus services to the city centre on your doorstep. Whether it's to benefit from the convenience that Temple Cowley has to offer, or to soak up the historic 'dreaming spires'. The private setting of The Curve invites your return to your own space.



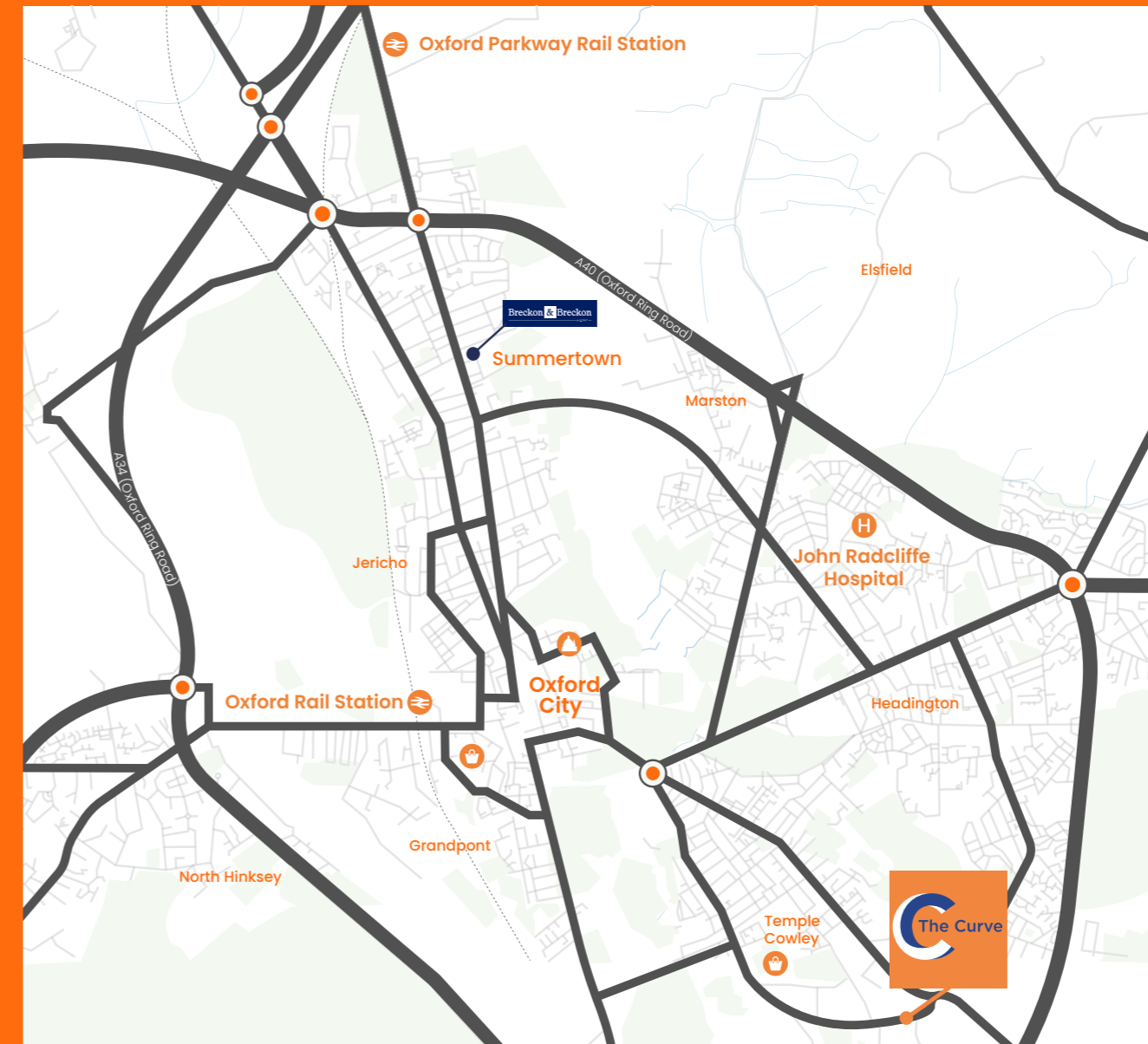
Love Living Local

Against the backdrop of Oxford's prestigious university, discover modern convenience just a 20 minute bus journey from home.

Within walking distance from The Curve is an abundance of local and modern amenities, be it in the Templars Square Shopping Centre, with gyms, cafés and high street brands, or Florence Park just a two minute walk away.



City-centric living



Oxford City, with the university and history at its core, has developed into a vibrant and bustling place to live. A culture capital, from the Ashmolean Museum, Playhouse Theatre and O2 Academy, to a high street shopping destination with the Westgate Centre and West Way Square.

Whilst the name of Between Towns Road suggests a halfway point, The Curve finds itself at the very centre of one of Oxford City's most eclectic and vibrant areas. Neighbour to the Templars Square Shopping Centre and just a short drive from Oxford's ring road, the city centre itself is 20 minutes away by public transport.

Ground floor apartments



Apartment 1

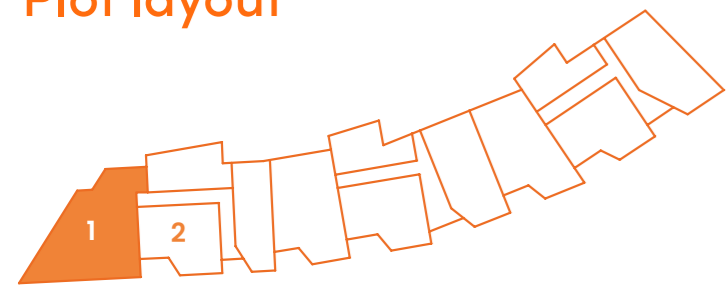
Ground floor

TOTAL GIA 81 SQ M / 872 SQ FT

Internal dimensions

Kitchen/living	5.55m x 3.50m	18'3" x 11'6"
Bath	2.60m x 2.56m	8'6" x 8'5"
Bed	1 3.00m x 5.10m	9'10" x 16'9"
Bed 2	4.55m x 2.40m	14'11" x 7'10"

Plot layout



Apartment 2

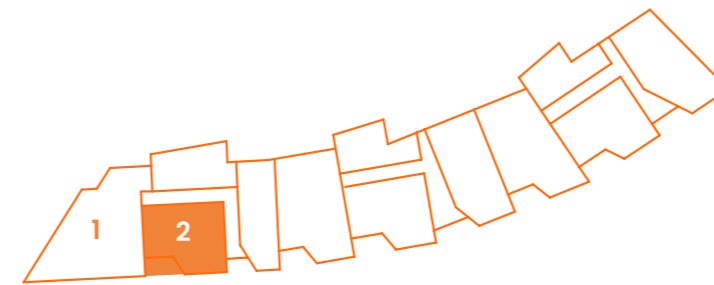
Ground floor

TOTAL GIA 51 SQ M / 549 SQ FT

Internal dimensions

Kitchen/Living	5.24m x 3.78m	17'2" x 12'5"
Bath	2.15m x 2.15m	7'1" x 7'1"
Bed 1	2.75m x 4.85m	9'0" x 15'11"

Plot layout



First floor apartments



Computer Generated Image

Apartment 101

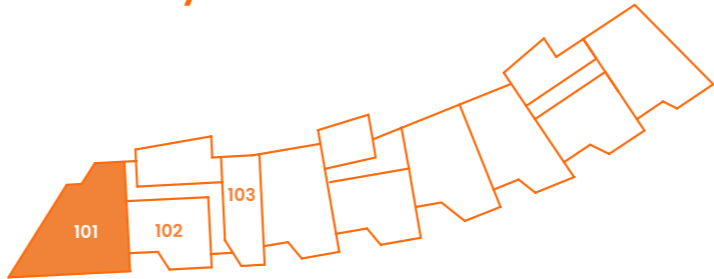
First floor

TOTAL GIA 78 SQ M / 840 SQ FT

Internal dimensions

Kitchen/Living	6.00m x 3.20m	19'8" x 10'6"
Bath	2.15m x 2.15m	7'0" x 7'0"
Bed 1	2.75m x 5.15m	9'0" x 16'10"
Bed 2	2.36m x 5.00m	7'9" x 16'5"

Plot layout



Apartment 102

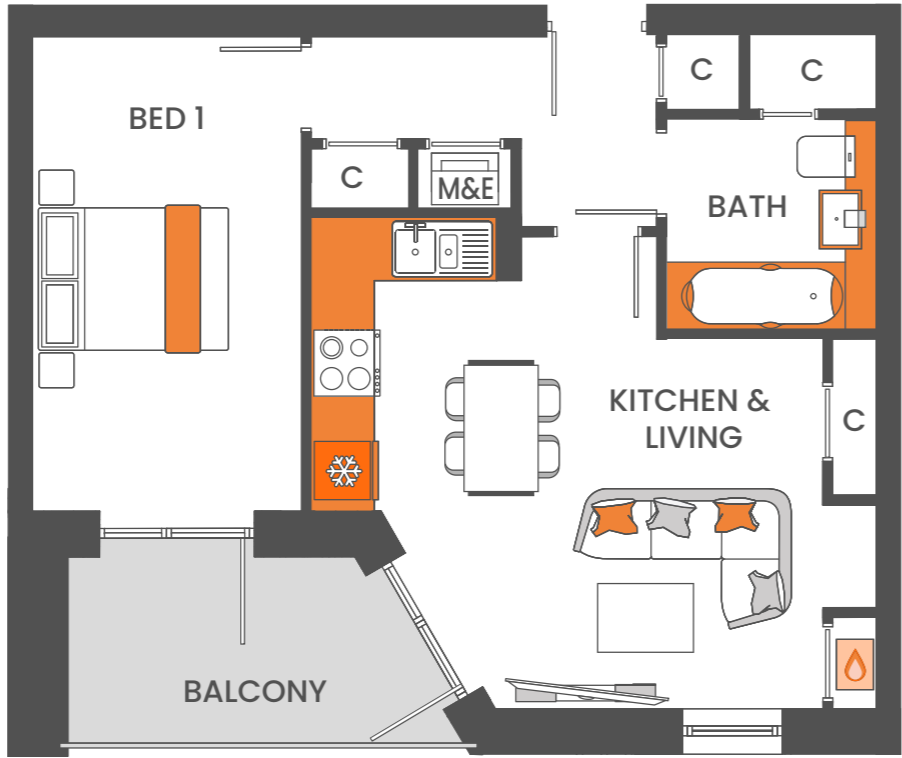
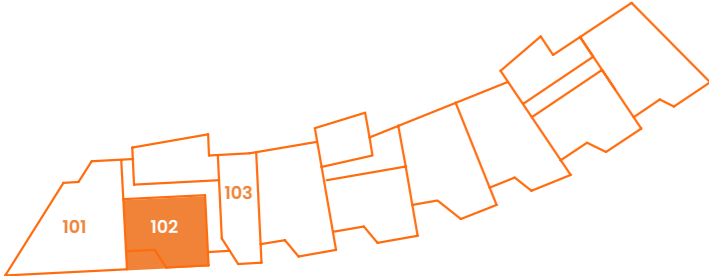
First floor

TOTAL GIA 51 SQ M / 549 SQ FT

Internal dimensions

Kitchen/Living	5.24m x 3.78m	17'2" x 12'5"
Bath	2.15m x 2.15m	7'1" x 7'1"
Bed 1	2.75m x 4.85m	9'0" x 15'11"

Plot layout



Apartment 103

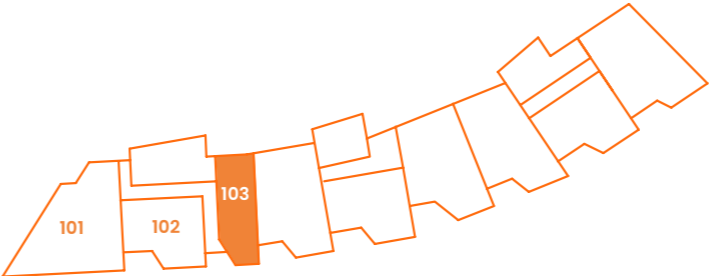
First floor

TOTAL GIA 55 SQ M / 592 SQ FT

Internal dimensions

Kitchen/Living	5.60m x 6.63m	18'4" x 21'9"
Bath	2.00m x 2.15m	6'7" x 7'0"
Bed 1	3.50m x 3.48m	11'6" x 11'5"

Plot layout



Second floor apartments



Computer Generated Image

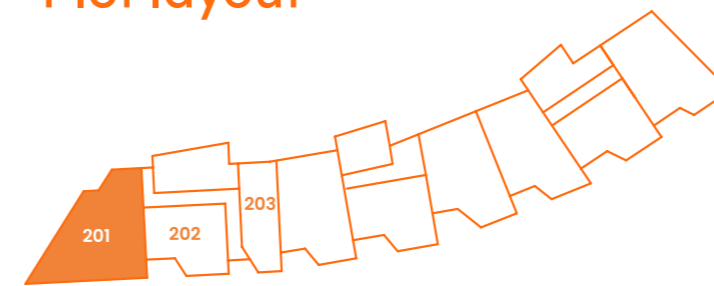
Apartment 201 Second floor

TOTAL GIA 78 SQ M / 840 SQ FT

Internal dimensions

Kitchen/Living	6.00m x 3.20m	19'8" x 10'6"
Bath	2.15m x 2.15m	7'0" x 7'0"
Bed 1	2.75m x 5.15m	9'0" x 16'10"
Bed 2	2.36m x 5.00m	7'9" x 16'5"

Plot layout



The Curve / OX Place / P17

Apartment 202

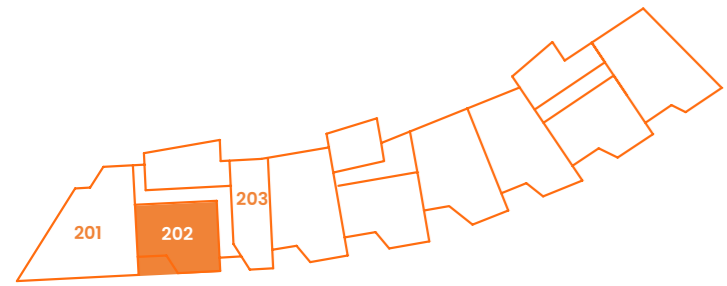
Second floor

TOTAL GIA 51 SQ M / 549 SQ FT

Internal dimensions

Kitchen/Living	5.24m x 3.78m	17'2" x 12'5"
Bath	2.15m x 2.15m	7'1" x 7'1"
Bed 1	2.75m x 4.85m	9'0" x 15'11"

Plot layout



Apartment 203

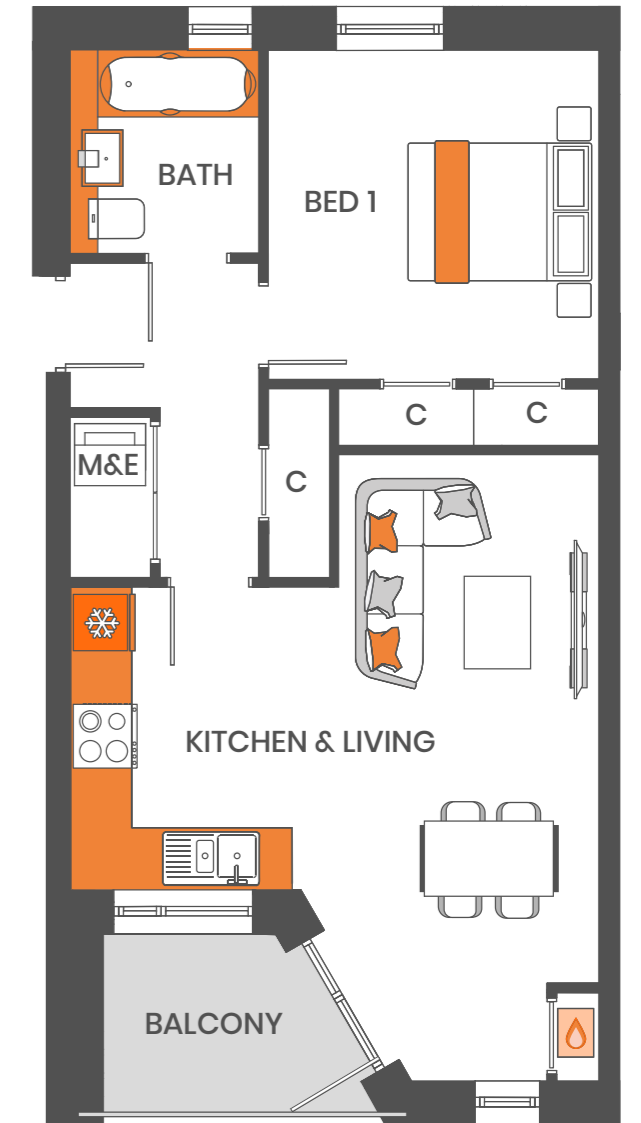
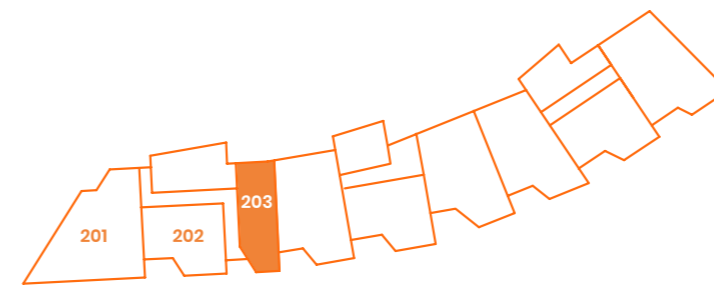
Second floor

TOTAL GIA 55 SQ M / 592 SQ FT

Internal dimensions

Kitchen/Living	5.60m x 6.63m	18'4" x 21'9"
Bath	2.00m x 2.15m	6'7" x 7'0"
Bed 1	3.50m x 3.48m	11'6" x 11'5"

Plot layout



Third floor apartments



Apartment 301 Third floor

TOTAL GIA 78 SQ M / 840 SQ FT

Internal dimensions

Kitchen/Living	6.00m x 3.20m	19'8" x 10'6"
Bath	2.15m x 2.15m	7'0" x 7'0"
Bed 1	2.75m x 5.15m	9'0" x 16'10"
Bed 2	2.36m x 5.00m	7'9" x 16'5"

Plot layout



Apartment 302

Third floor

TOTAL GIA 51 SQ M / 549 SQ FT

Internal dimensions

Kitchen/Living	5.24m x 3.78m	17'2" x 12'5"
Bath	2.15m x 2.15m	7'1" x 7'1"
Bed 1	2.75m x 4.85m	9'0" x 15'11"

Plot layout



Apartment 303

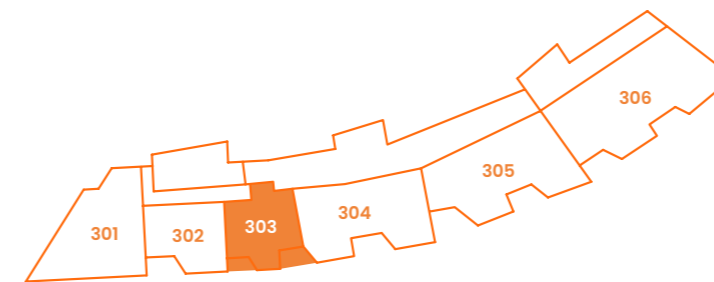
Third floor

TOTAL GIA 53 SQ M / 570 SQ FT

Internal dimensions

Kitchen/Living	5.60m x 6.63m	18'4" x 21'9"
Bath	2.00m x 2.15m	6'7" x 7'0"
Bed 1	3.50m x 3.48m	11'6" x 11'5"

Plot layout



Apartment 304

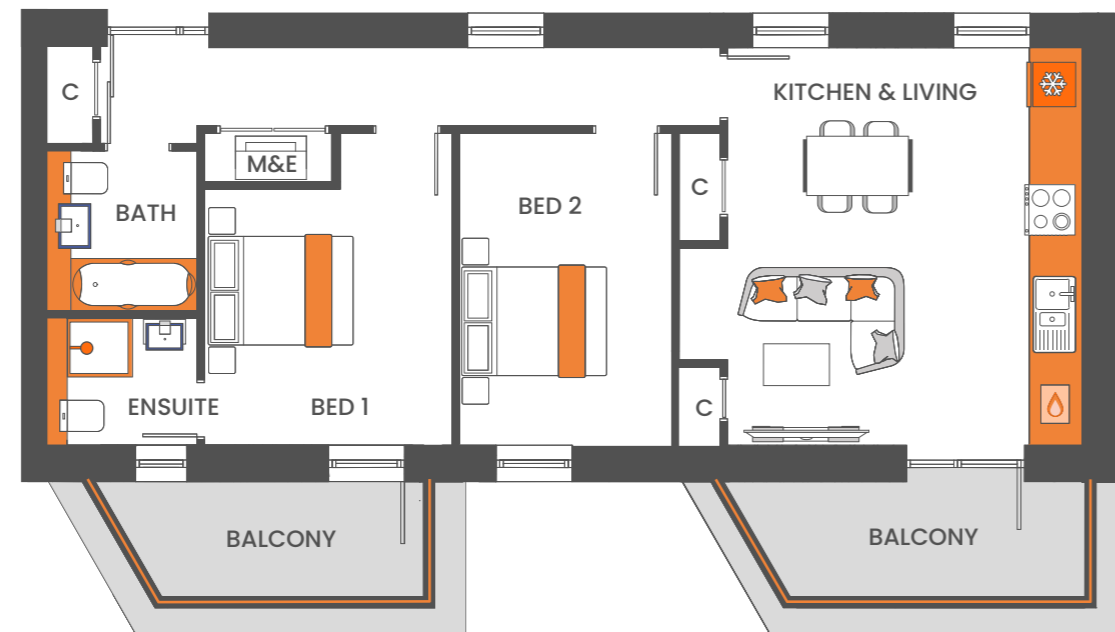
Third floor

TOTAL GIA 74 SQ M / 797 SQ FT

Internal dimensions

Kitchen/Living	5.30m x 5.35m	17'5" x 17'7"
Bath	2.00m x 2.15m	7'5" x 7'1"
Bed 1	3.30m x 3.50m	10'10" x 11'6"
Bed 2	2.85m x 4.20m	9'4" x 13'9"

Plot layout



Apartment 305

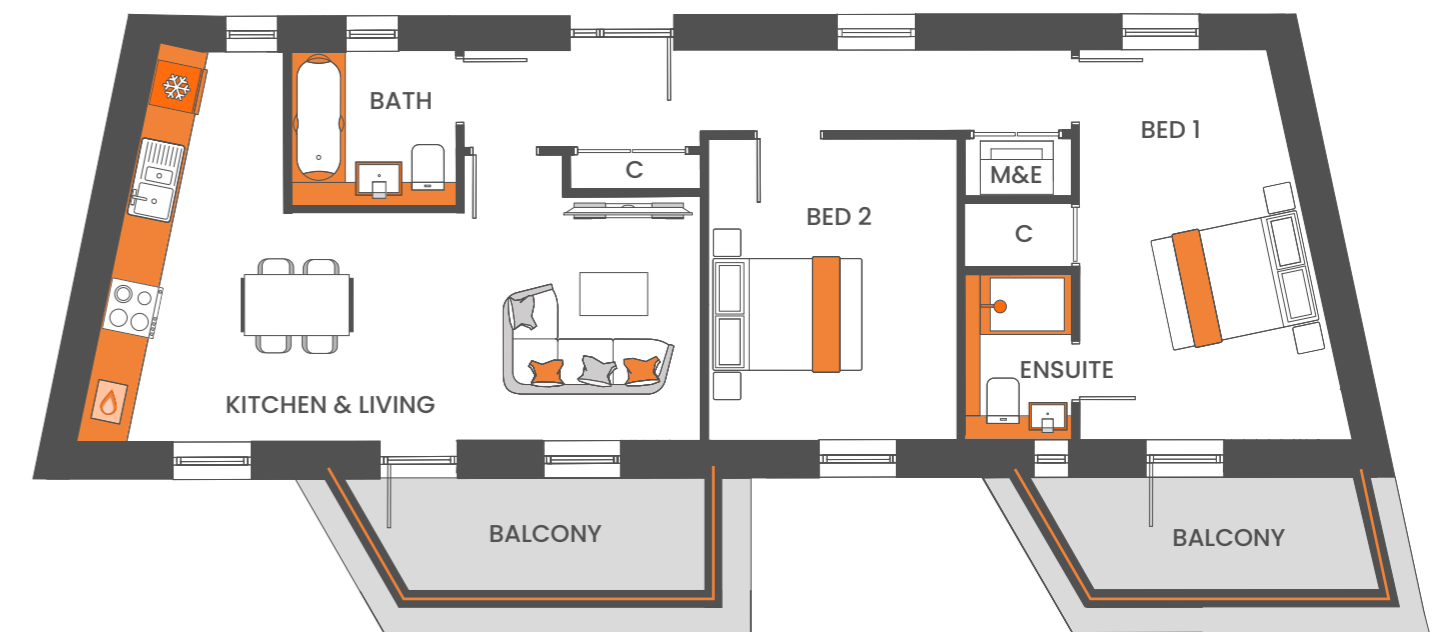
Third floor

TOTAL GIA 79 SQ M / 850 SQ FT

Internal dimensions

Kitchen/Living	7.90m x 3.18m	25'11" x 10'5"
Bath	2.15m x 2.00m	7'1" x 6'7"
Bed	1 3.45m x 5.20m	11'4" x 17'1"
Bed	2 3.25m x 3.95m	10'8" x 12'11"

Plot layout



Apartment 306

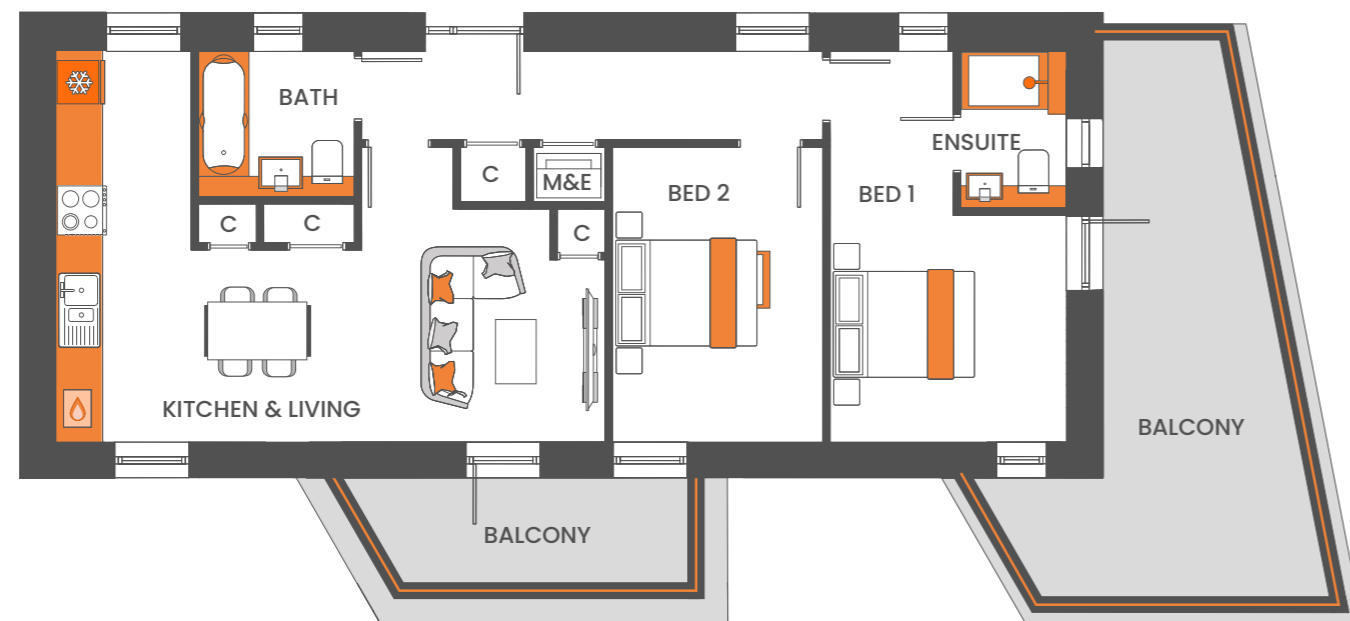
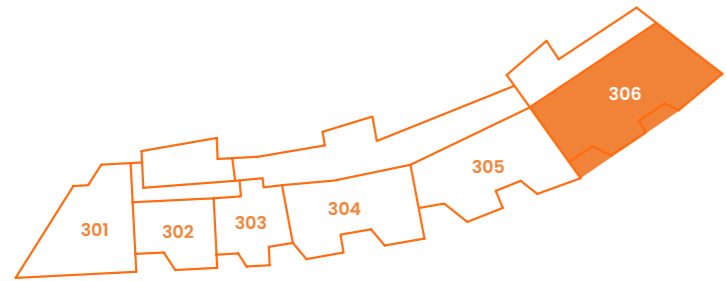
Third floor

TOTAL GIA 75 SQ M / 807 SQ FT

Internal dimensions

Kitchen/Living	7.50m x 3.15m	24'7" x 10'4"
Bath	2.15m x 2.00m	7'1" x 6'7"
Bed 1	3.25m x 5.40m	10'8" x 17'9"
Bed 2	2.90m x 4.00m	9'6" x 13'1"

Plot layout



Fourth floor apartments



Apartment 401

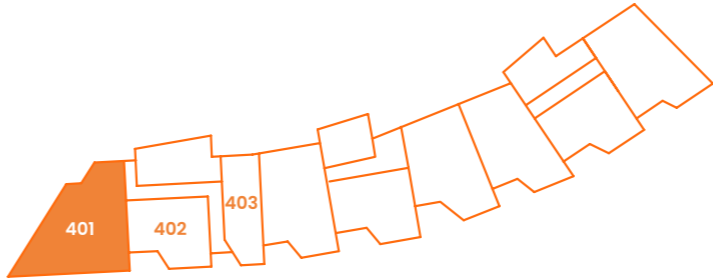
Fourth floor

TOTAL GIA 78 SQ M / 840 SQ FT

Internal dimensions

Kitchen/Living	7.90m x 3.18m	25'11" x 10'5"
Bath	2.15m x 2.00m	7'1" x 6'7"
Bed	1 3.45m x 5.20m	11'4" x 17'1"
Bed	2 3.25m x 3.95m	10'8" x 12'11"

Plot layout



Apartment 402

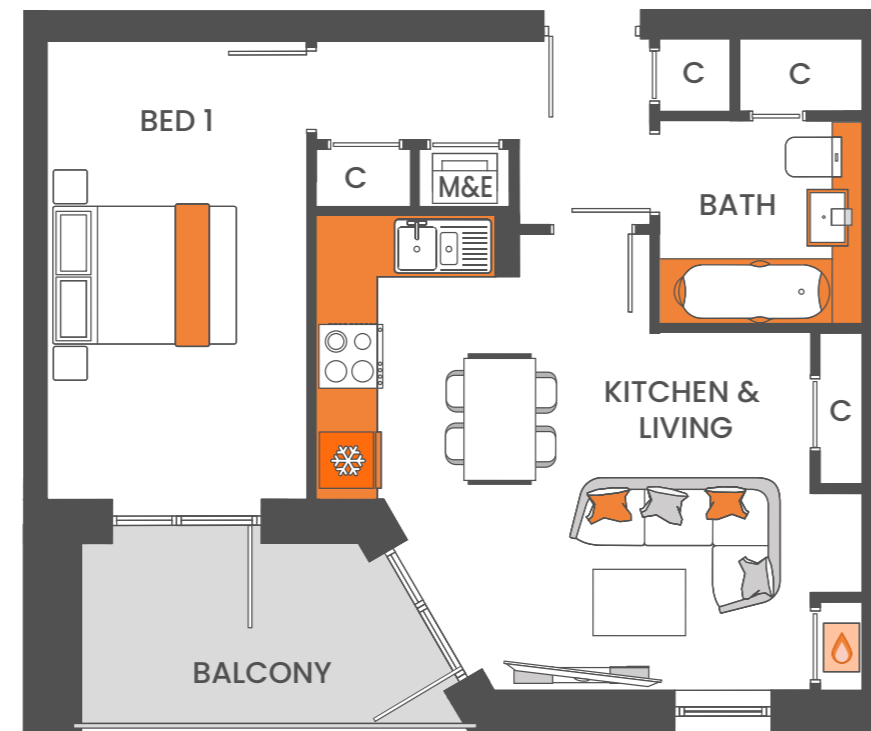
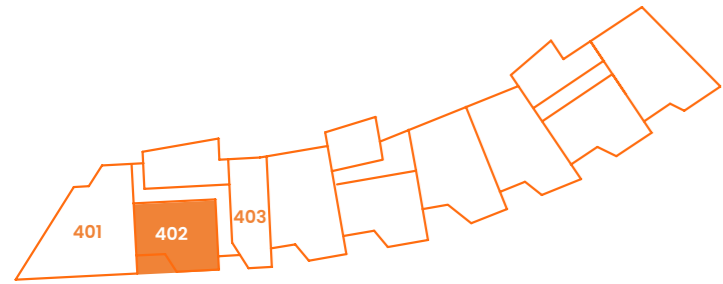
Fourth floor

TOTAL GIA 51 SQ M / 549 SQ FT

Internal dimensions

Kitchen/Living	5.24m x 3.78m	17'2" x 12'5"
Bath	2.15m x 2.15m	7'1" x 7'1"
Bed 1	2.75m x 4.85m	9'0" x 15'11"

Plot layout



Apartment 403

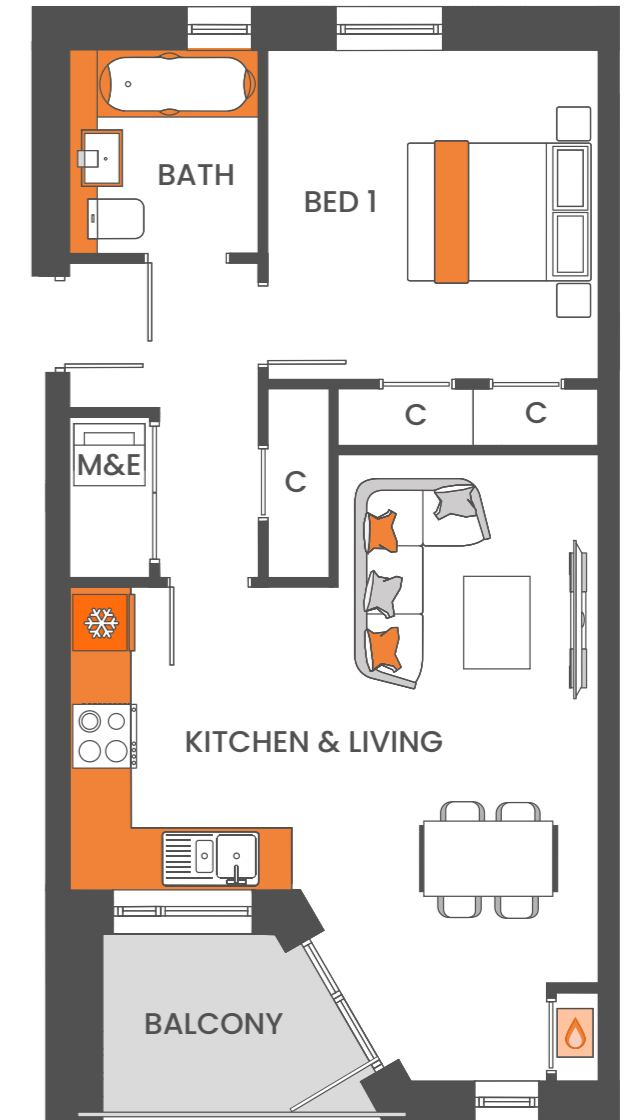
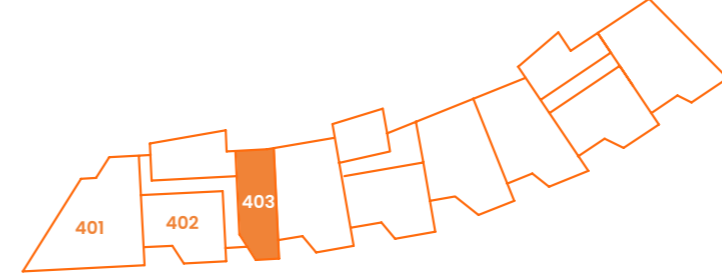
Fourth floor

TOTAL GIA 56 SQ M / 603 SQ FT

Internal dimensions

Kitchen/Living	5.60m x 6.63m	18'4" x 21'9"
Bath	2.00m x 2.15m	6'7" x 7'0"
Bed 1	3.50m x 3.48m	11'6" x 11'5"

Plot layout



Apartment specification



INTERNAL/GENERAL FEATURES

- Dulux 'White Mist' paint to walls
- Dulux White Satin paint to woodwork
- GDX Entrance System
- TV points in living area (on media plate) and main bedroom
- Vaillant combi boiler
- Smoke/CO² detectors
- Oak veneered Internal Doors
- Recessed downlights to kitchen area and main bathroom, pendants to hall and bedrooms

FLOORING

- Engineered oak flooring to kitchen, living room & hallways
- Carpets to bedrooms
- Tiled flooring to bathroom and en-suites

KITCHEN FEATURES

- Premiere 'Chelsea' Range Kitchen Units
- Fully integrated kitchen appliances including fridge freezer, ceramic hob, oven, dishwasher & cookerhood
- Washer/dryer in hallway cupboard

BATHROOM FEATURES

- Chrome heated towel rail
- Glass shower screen to bath
- Ceramic wall tiles
- Contemporary white bathroom suites
- Inset spotlights

EN-SUITE FEATURES

- Chrome heated towel rail
- Shower cubicle with glass shower screen
- Ceramic wall tiles

EXTERNAL FEATURES

- Doorbell
- Lift
- Communal bike store
- Communal bin store
- Shared secure communal courtyard garden
- Balcony with composite timber decking
- Outside lights to balcony/terrace

ENVIRONMENTAL & SUSTAINABILITY

- The roofs will have PVs, to be used to power the communal spaces
- Mechanical heat recovery ventilation

The townhouses



The townhouses

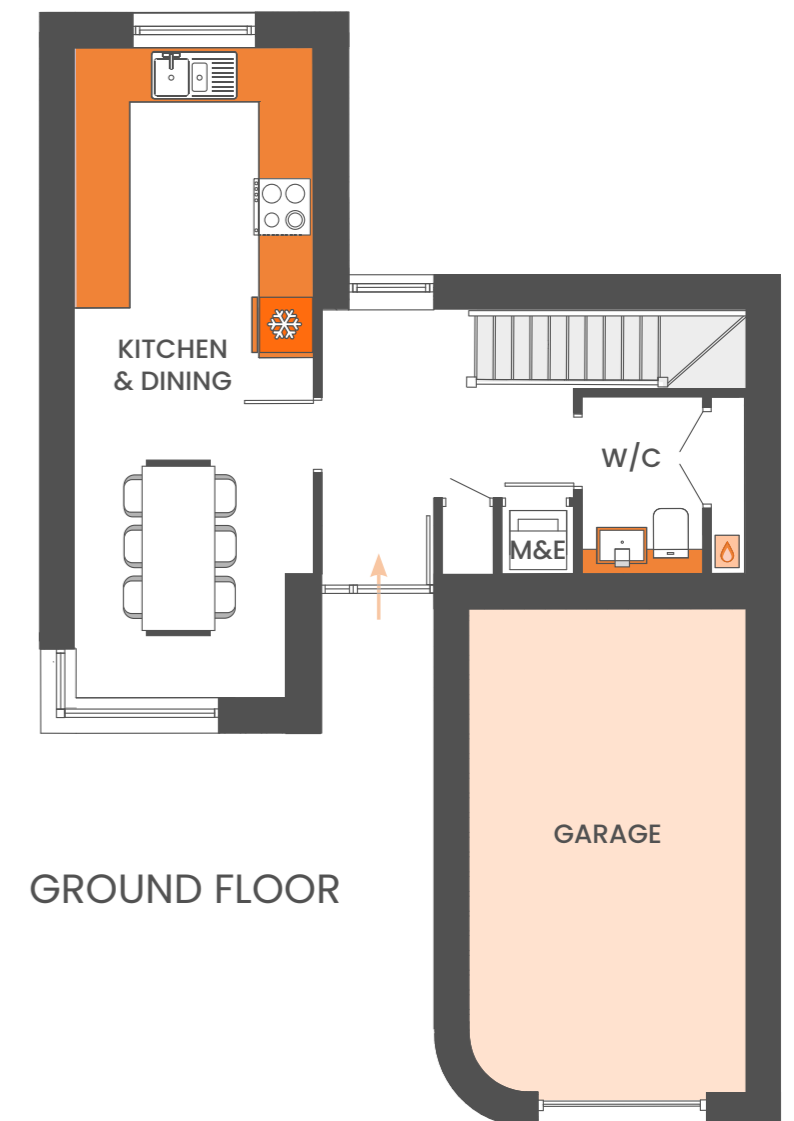
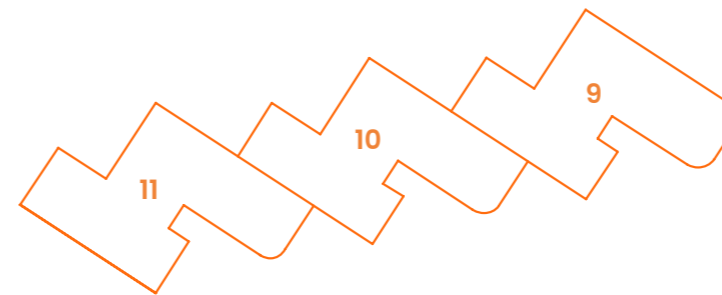
TOTAL GIA 126.5 SQ M / 1,362 SQ FT

Internal dimensions

Kitchen/Dining 2.87m x 7.80m 9'5" x 25'7"

Garage 3.34m x 5.80m 10'11" x 19'0"

Plot layout



The townhouses

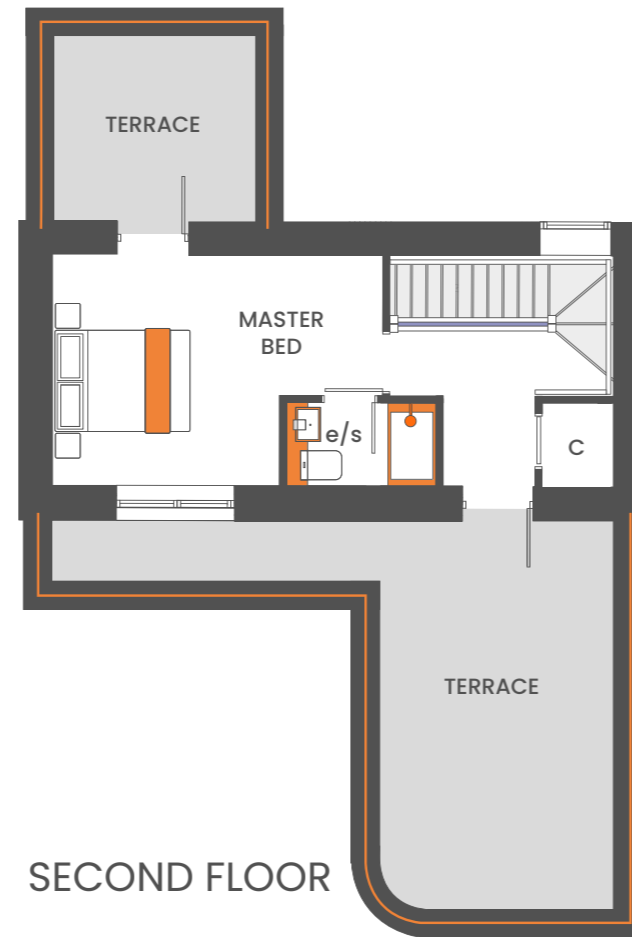
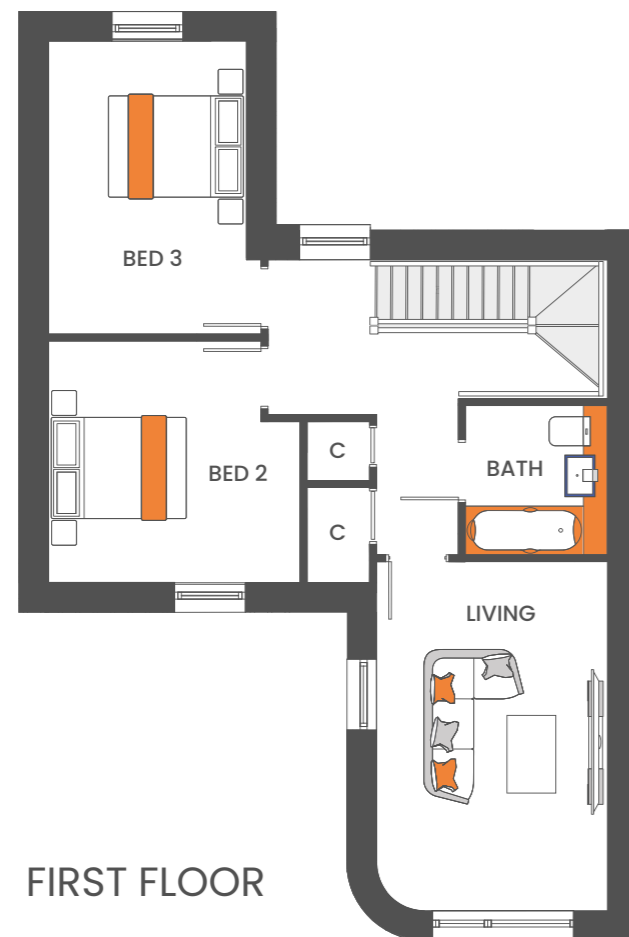
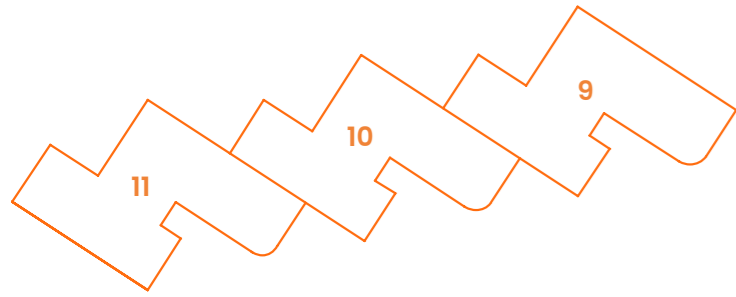
TOTAL GIA 126.5 SQ M / 1,361 SQ FT

Internal dimensions

Kitchen/Dining 2.87m x 7.80m 9'5" x 25'7"

Garage 3.34m x 5.80m 10'11" x 19'0"

Plot layout



INTERNAL/GENERAL FEATURES

- Dulux 'White Mist' paint to walls
- Dulux White Satin paint to woodwork
- TV points in living area (on media plate) and main bedroom
- Vaillant combi boiler
- Smoke/CO² detectors
- Oak veneered Internal Doors
- Recessed downlights to kitchen area and main bathroom, pendants to hall and bedrooms

FLOORING

- Engineered oak flooring to kitchen, living room & ground floor hallway
- Carpets to bedrooms, stairs and upper hallways
- Tiled flooring to bathroom, en-suites and cloakrooms

KITCHEN FEATURES

- Premiere 'Chelsea' Range Kitchen Units
- Fully integrated kitchen appliances including fridge freezer, ceramic hob, oven, dishwasher & cookerhood
- Washer/dryer in hallway cupboard

BATHROOM FEATURES

- Chrome heated towel rail
- Glass shower screen to bath
- Ceramic wall tiles
- Contemporary white bathroom suites
- Inset spotlights

EN-SUITE FEATURES

- Chrome heated towel rail
- Shower cubicle with glass shower screen
- Ceramic wall tiles

EXTERNAL FEATURES

- Doorbell
- Bike store
- Bin store
- Roof terrace with composite timber decking
- Outside lights to terraces
- Garage
- Rear courtyard garden



OX Place



Breckon & Breckon
— est.1947 —

Viewings by appointment

Twining House
294 Banbury Road
Summertown
Oxford. OX2 7ED

T: 01865 261222

E: newhomes@breckon.co.uk

Find out more

breckon.co.uk/thecurve

PLEASE NOTE: Whilst the details contained within this brochure have been prepared with all due care for the convenience of the intending purchaser, the information provided is a guide and for information purposes only, and as such their accuracy cannot be guaranteed. They do not in whole or in part constitute or form part of any offer or contract. Any text, images or plans are for guidance only, and should not be considered as comprehensive. Any areas, measurements or distances given are approximate and Breckon & Breckon take no responsibility for any error or omission. Layouts and fixtures shown may vary and should not be used for fitting carpets, curtains, furniture or appliances. Any furniture illustrated is for guidance only and is not included with the property. The floor plans depict typical layouts and are not to scale. Cupboards in some properties may vary.

Breckon & Breckon cannot confirm the working condition of any services, appliances or facilities associated to the property, nor can we confirm the condition of the property as a whole - any purchasers should seek verification through their survey or solicitor. Some of the photography contained within the brochure are images of the surrounding local areas and virtually staged images of the interiors.